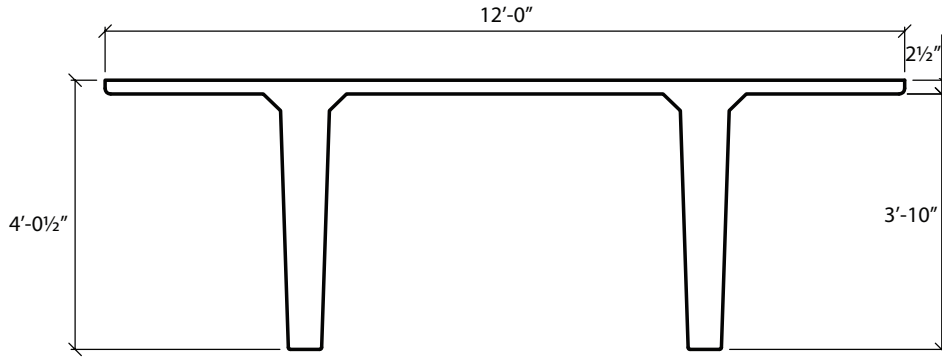


12'-0" x 48 1/2" Double Tees No Structural Topping

Dead Load Weight of Tee = 94 psf



Section Properties	
A=1078 in. ²	Yt=13.84 in.
I=246,355 in. ⁴	Yb=28.66 in.

ØM _n ft-K	2318	2663	3007	3332	3655	3959	4262	4545
Strands	12-0.6"Ø	14-0.6"Ø	16-0.6"Ø	18-0.6"Ø	20-0.6"Ø	22-0.6"Ø	24-0.6"Ø	26-0.6"Ø
Span in Feet	Allowable Superimposed Load in Pounds Per Square Foot							
74	105	131	158	182	204	216	227	
76	96	121	146	169	190	201	212	
78	87	111	135	157	177	188	198	
80	80	102	124	146	165	175	185	
82	72	94	115	135	153	163	173	181
84	66	86	106	125	143	153	162	170
86	59	79	98	116	133	143	151	159
88	53	72	91	108	124	133	142	149
90	48	66	83	100	116	125	133	140
92	43	60	77	93	108	116	124	131
94		54	70	86	101	109	116	123
96		49	65	79	94	102	109	115
98		44	59	73	87	95	102	108
100			54	68	81	88	95	101
102			49	62	75	83	89	95
104			45	57	69	77	83	89
106				52	64	72	78	83
108				48	59	67	73	78
110				43	54	62	68	73
112					50	57	63	68
114					46	53	59	64
116						49	54	59
118						45	51	55
120							47	51
122							43	48
124								44
126								41

Camber
 1"-2"
 ≥ 2"