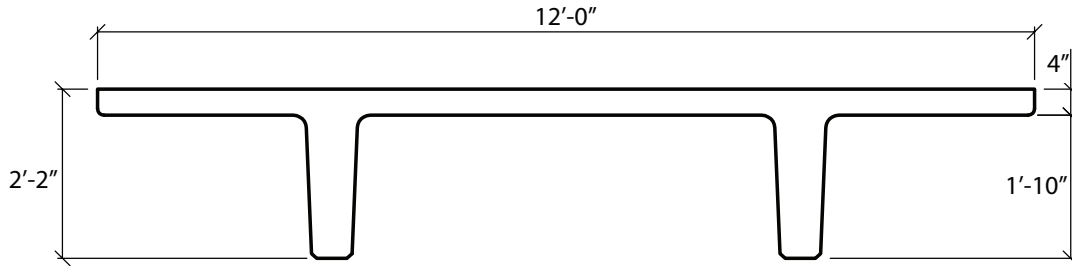


## 12'-0" x 26" PreTopped Double Tees

Dead Load Weight of Tee = 77 psf



Section Properties						
	A=888 in. <sup>2</sup>		Yt=6.4 in.			
	I=44,997 in. <sup>4</sup>		Yb=19.6 in.			
ØM <sub>n</sub> ft-K	599	778	947	1105	1253	1390
Strands	6-0.6"Ø	8-0.6"Ø	10-0.6"Ø	12-0.6"Ø	14-0.6"Ø	16-0.6"Ø
Span in Feet	Allowable Superimposed Load in Pounds Per Square Foot					
30	220					
32	186					
34	158	223				
36	135	192	247			
38	115	167	215			
40	98	145	189	230		
42	84	126	166	203		
44	71	110	146	180		
46	60	95	129	160		
48	51	83	113	142		
50	42	72	100	126	145	
52		62	88	112	130	
54		53	78	100	117	
56		46	68	89	105	115
58			60	79	95	104
60			52	70	85	94
62			45	62	76	85
64				55	68	76
66				48	61	69
68				42	55	62
70					49	56
72					43	50
74						44
76						40

**Camber**

	1"-2"
	≥ 2"