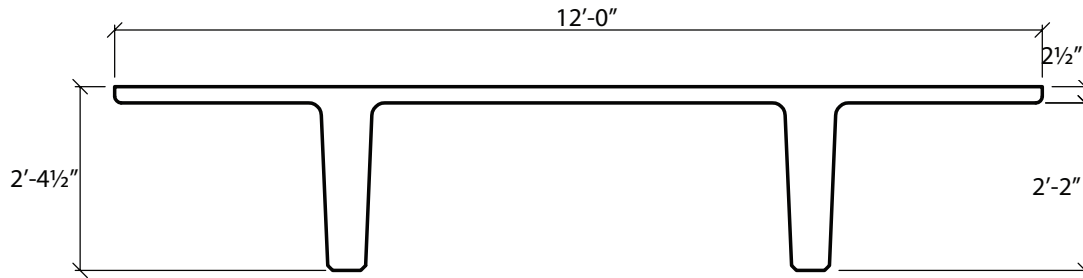


12'-0" x 28 1/2" Double Tees No Structural Topping

Dead Load Weight of Tee = 62 psf



Section Properties	
A=720 in. ²	Yt=8.03 in.
I=53.420 in. ⁴	Yb=20.47 in.

∅M _n ft-K	866	1057	1237	1407	1566	1715
Strands	8-0.6"∅	10-0.6"∅	12-0.6"∅	14-0.6"∅	16-0.6"∅	18-0.6"∅
Span in Feet	Allowable Superimposed Load in Pounds Per Square Foot					
36	232					
38	203					
40	179	228				
42	158	203				
44	140	181	219			
46	124	161	197			
48	110	144	177			
50	97	129	159			
52	87	116	144			
54	77	104	130			
56	68	94	118	133		
58	60	84	106	121		
60	53	75	96	111		
62	47	68	87	101		
64	41	61	79	92		
66		54	71	84	92	
68		48	65	77	84	
70		43	58	70	77	
72			53	64	71	76
74			47	58	65	70
76			42	53	59	65
78				48	54	59
80				44	50	54
82				40	45	50
84					41	46
86						42

Camber

1"-2" (Grey)

≥ 2" (Red)