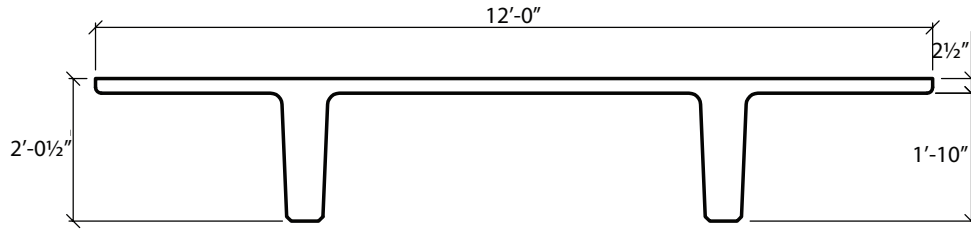


12'-0" x 24 1/2" Double Tees No Structural Topping

Dead Load Weight of Tee = 58 psf



Section Properties	
A=672 in. ²	Yt=6.71 in.
I=35.851 in. ⁴	Yb=17.79 in.

ϕM_n ft-K	560	726	881	1026	1160	1285
Strands	6-0.6"Ø	8-0.6"Ø	10-0.6"Ø	12-0.6"Ø	14-0.6"Ø	16-0.6"Ø
Span in Feet	Allowable Superimposed Load in Pounds Per Square Foot					
30	215					
32	184					
34	158	218				
36	136	190	240			
38	118	166	210			
40	102	145	186			
42	89	128	164			
44	77	112	146			
46	66	99	130	156		
48	57	88	116	140		
50	50	77	103	126		
52	42	68	92	114		
54		60	82	102		
56		53	73	92	102	
58		46	65	83	92	
60		40	58	75	84	
62			52	68	76	
64			46	61	69	75
66			40	54	62	69
68				49	57	62
70				44	51	57
72					46	52
74					42	47
76						42

Camber

1"-2" (Grey)

≥ 2" (Red)