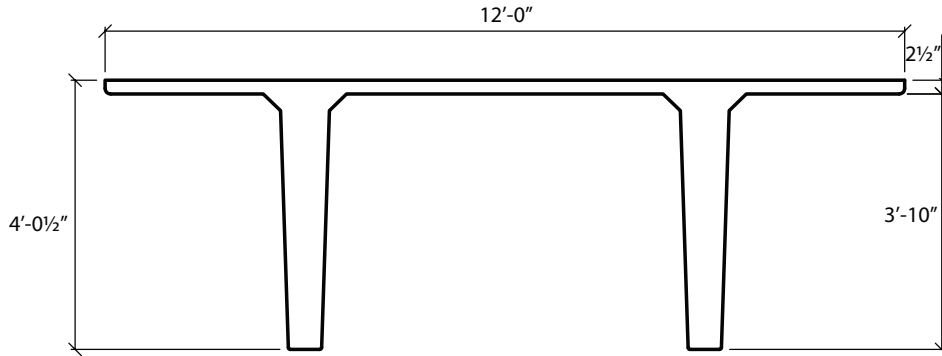


12'-0" x 48 1/2" Double Tees With Structural Topping



2 INCH MINIMUM AT MIDSPAN

Dead Load Weight of Tee with Topping = 119 psf



Section Properties	
A=1313 In. ²	Yt=15.2 in.
I=304029 in. ⁴	Yb=35.3 in.

∅M _n ft-K	2417	2778	3137	3476	3813	4131	4448	4745
Strands	12-0.6"∅	14-0.6"∅	16-0.6"∅	18-0.6"∅	20-0.6"∅	22-0.6"∅	24-0.6"∅	26-0.6"∅
Span in Feet	Allowable Superimposed Load in Pounds Per Square Foot							
64	156	192	229					
66	141	176	210	242				
68	128	160	193	223				
70	115	146	177	206	234			
72	104	133	162	189	216	237		
74	94	121	149	174	200	220	232	
76	84	110	136	161	185	203	215	
78	75	100	125	148	171	188	200	
80	67	91	114	136	158	174	185	
82	60	82	104	125	146	161	172	181
84	53	74	95	115	135	149	159	168
86		66	87	106	125	137	147	156
88		59	79	97	115	127	137	145
90		53	71	89	106	117	126	135
92			64	81	98	108	117	125
94			58	74	90	99	108	116
96			52	67	82	91	100	107
98				61	75	83	92	99
100				55	68	76	84	91
102					61	70	77	84
104					55	63	71	77
106						57	65	71
108						52	59	65
110							53	59
112							48	54
114								49
116								44

Camber
 1"-2"
 ≥ 2"

Load Tables are presented as guidelines only. Design requirements must be reviewed by the engineer of record for each specific project.
 Spancrete | P.O. Box 828 | Waukesha, WI 53187 | 414-290-9000 | www.spancrete.com