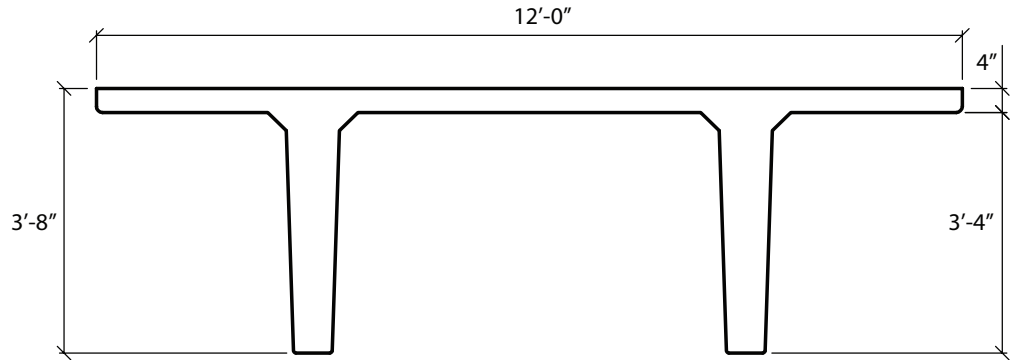


12'-0" x 44" PreTopped Double Tees

Dead Load Weight of Tee = 106 psf



Section Properties	
A=1222 in. ²	Yt=12.76 in.
I=215.457 in. ⁴	Yb=31.24 in.

∅M _n ft-K	1755	2081	2387	2691	2976	3260	3524	3787
Strands	10-0.6"∅	12-0.6"∅	14-0.6"∅	16-0.6"∅	18-0.6"∅	20-0.6"∅	22-0.6"∅	24-0.6"∅
Span in Feet	Allowable Superimposed Load in Pounds Per Square Foot							
62	111	146	180	212	243			
64	99	132	164	195	224			
66	89	120	149	178	206	233		
68	79	108	136	163	189	215	233	
70	70	98	124	150	174	198	216	227
72	62	88	113	137	160	183	200	211
74	54	79	102	126	147	169	185	196
76	47	71	93	115	135	156	172	182
78	41	63	84	105	125	144	160	169
80		56	76	96	115	133	148	157
82		50	69	88	105	123	138	146
84		44	62	80	97	113	128	136
86			55	72	89	104	119	127
88			49	66	81	96	110	118
90			44	59	74	89	102	110
92				53	67	81	94	102
94				48	61	75	87	95
96				42	55	68	80	88
98					50	62	74	81
100					45	57	68	75
102					40	51	62	70
104						46	57	64
106						42	52	59
108							47	55
110							42	50
112								46
114								42

Camber

1"-2" (Grey)

≥ 2" (Red)