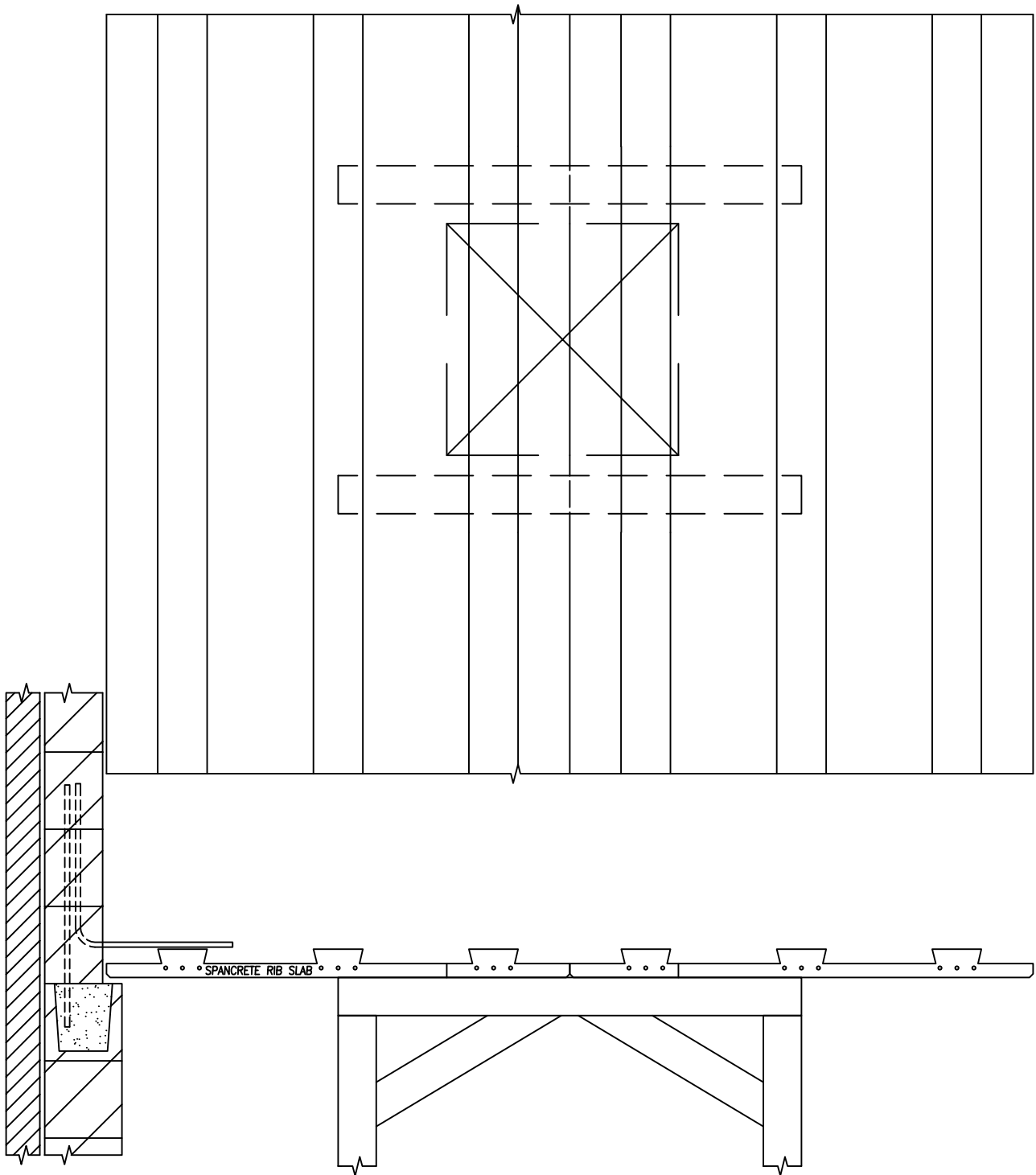


SPANCRETE®



**RIB SLAB
OPENING DETAILS**



RIB SLAB OPENING
SHORE WORK AREA

SPANCRETE®

DESIGN & ENGINEERING OFFICES

WAUKESHA, WI: 414-290-9000
VALDERS, WI: 920-775-4121

SALES OFFICES

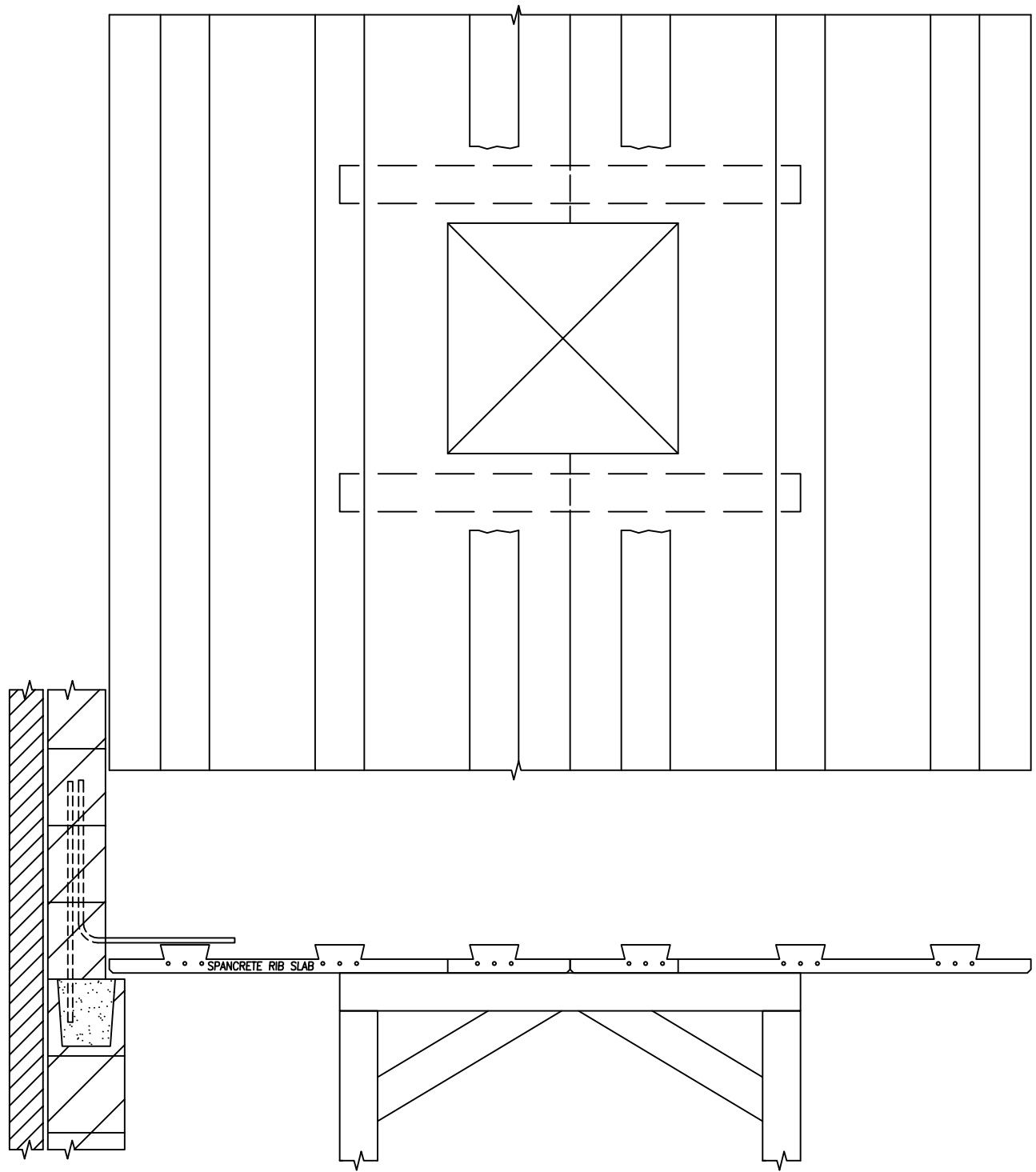
WAUKESHA, WI
(414) 290-9000

GREEN BAY, WI
(920) 494-0274

NAPERVILLE, IL
(847) 879-2100

DETAIL NUMBER

RS4.1



RIB SLAB OPENING
CUT OPENING
REMOVE RIBS

SPANCRETE®

DESIGN & ENGINEERING OFFICES

WAUKESHA, WI: 414-290-9000
 VALDERS, WI: 920-775-4121

SALES OFFICES

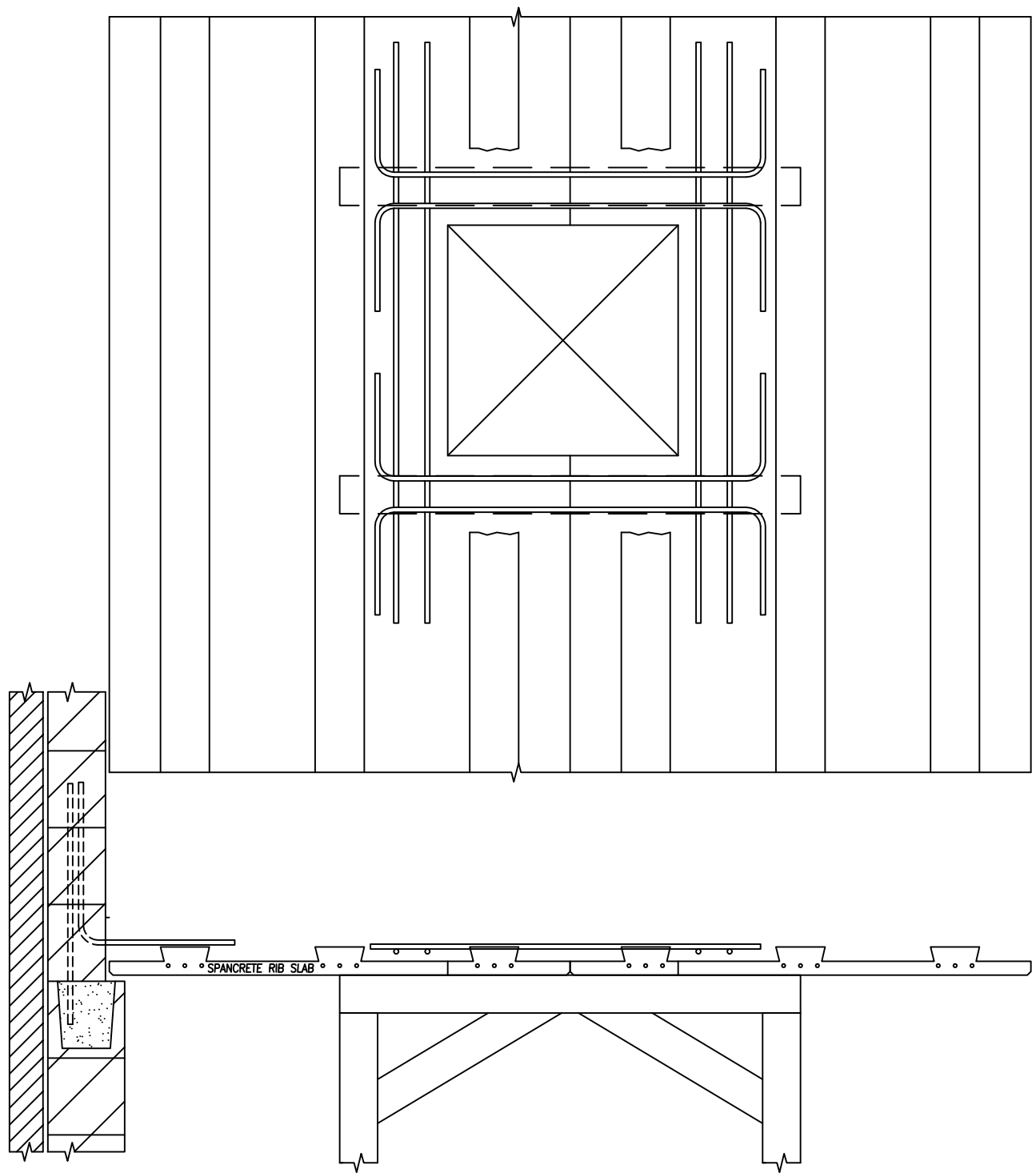
WAUKESHA, WI
 (414) 290-9000

GREEN BAY, WI
 (920) 494-0274

NAPERVILLE, IL
 (847) 879-2100

DETAIL NUMBER

RS4.2



RIB SLAB OPENING
PLACE REBAR

SPANCRETE®

DESIGN & ENGINEERING OFFICES

WAUKESHA, WI: 414-290-9000
VALDERS, WI: 920-775-4121

SALES OFFICES

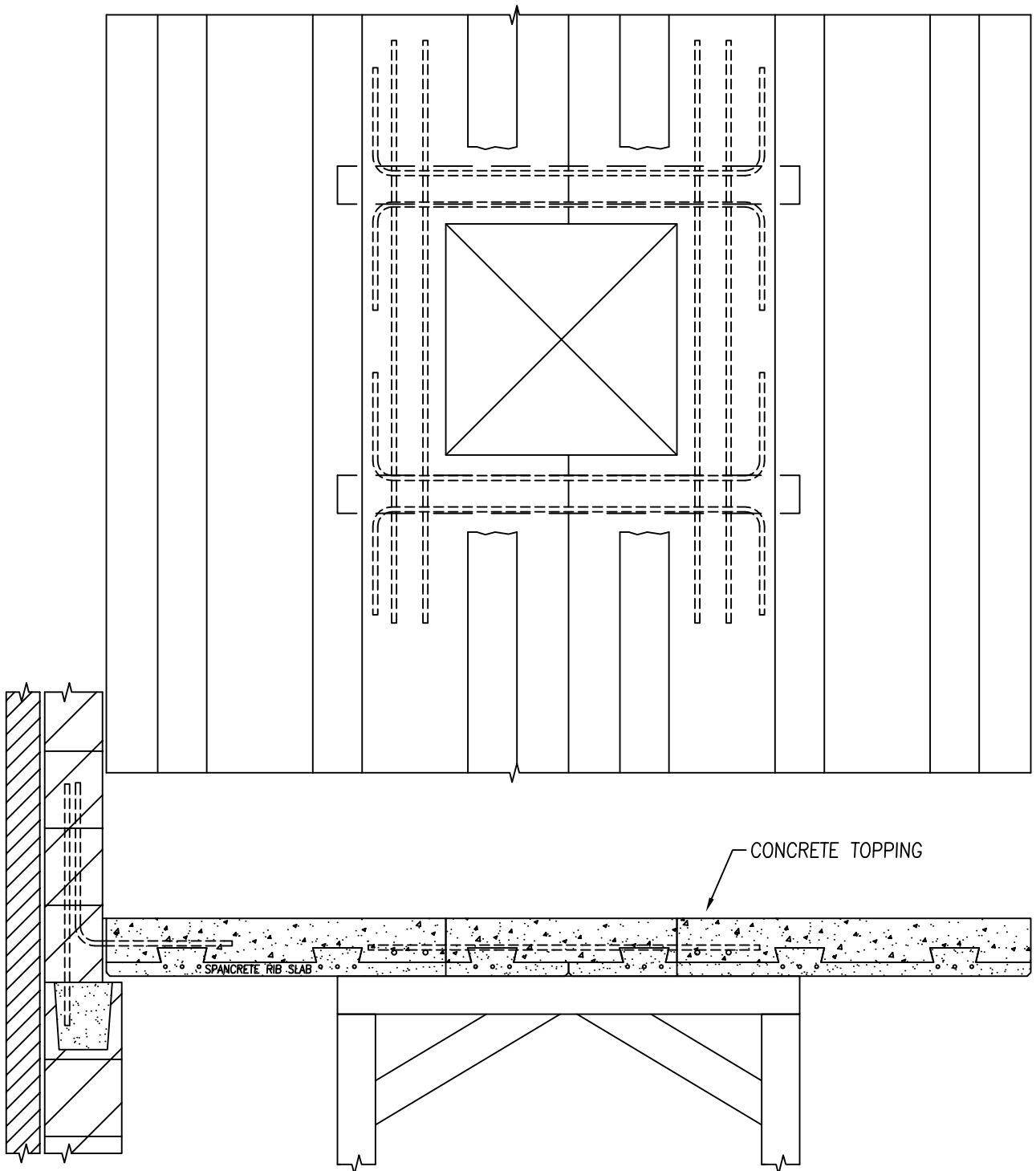
WAUKESHA, WI
(414) 290-9000

GREEN BAY, WI
(920) 494-0274

NAPERVILLE, IL
(847) 879-2100

DETAIL NUMBER

RS4.3



RIB SLAB OPENING
CAST TOPPING

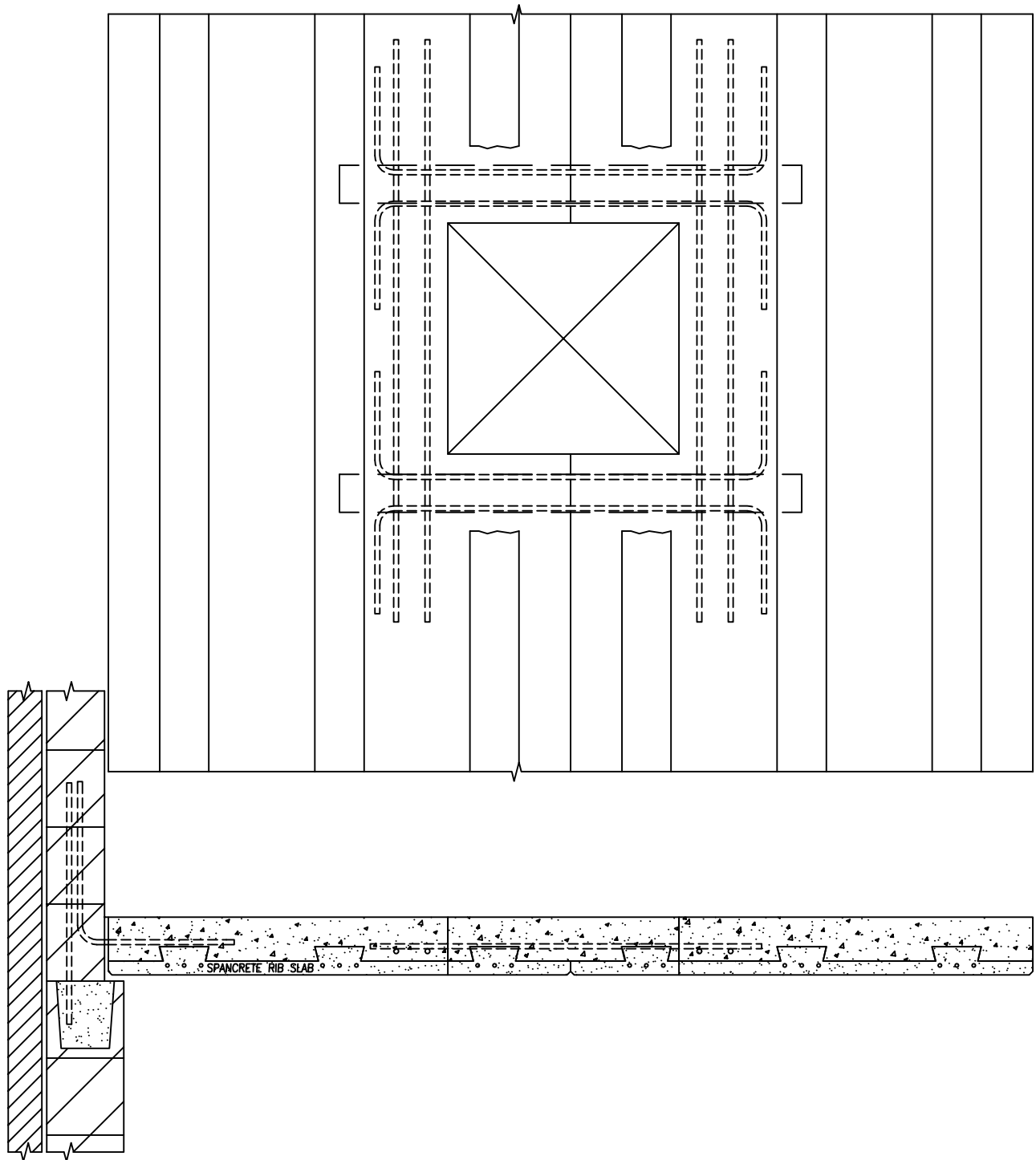
SPANCRETE[®]
 DESIGN & ENGINEERING OFFICES
 WAUKESHA, WI: 414-290-9000
 VALDERS, WI: 920-775-4121

SALES OFFICES

WAUKESHA, WI	GREEN BAY, WI	NAPERVILLE, IL
(414) 290-9000	(920) 494-0274	(847) 879-2100

DETAIL NUMBER

RS4.4



RIB SLAB OPENING
WHEN TOPPING CURED, REMOVE SHORING

SPANCRETE®

DESIGN & ENGINEERING OFFICES

WAUKESHA, WI: 414-290-9000
 VALDERS, WI: 920-775-4121

SALES OFFICES

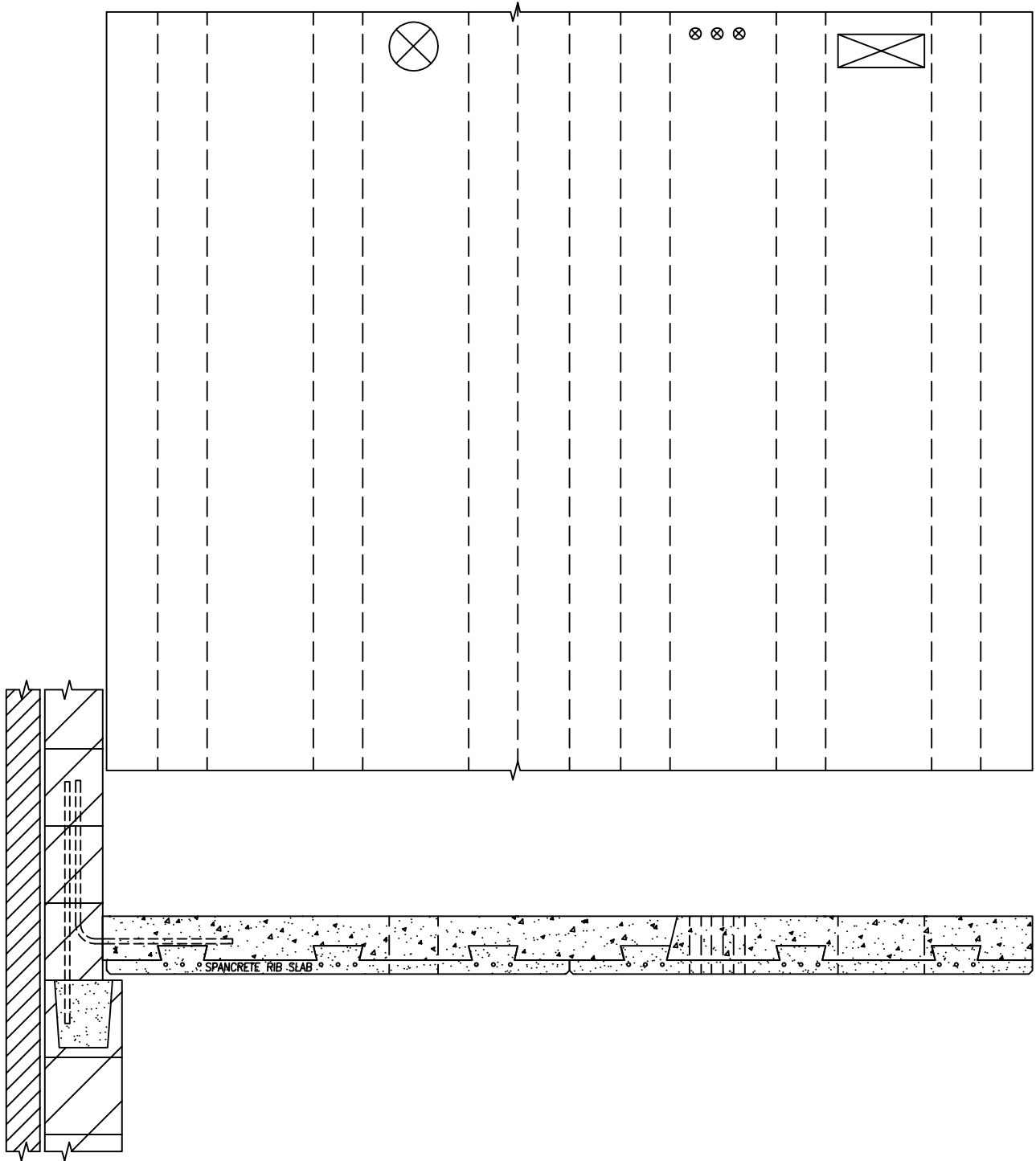
WAUKESHA, WI
 (414) 290-9000

GREEN BAY, WI
 (920) 494-0274

NAPERVILLE, IL
 (847) 879-2100

DETAIL NUMBER

RS4.5



RIB SLAB OPENING
SMALL OPENINGS BETWEEN
RIBS DO NOT REQUIRE SHORING

SPANCRETE®

DESIGN & ENGINEERING OFFICES

WAUKESHA, WI: 414-290-9000
VALDERS, WI: 920-775-4121

SALES OFFICES

WAUKESHA, WI
(414) 290-9000

GREEN BAY, WI
(920) 494-0274

NAPERVILLE, IL
(847) 879-2100

DETAIL NUMBER

RS4.6