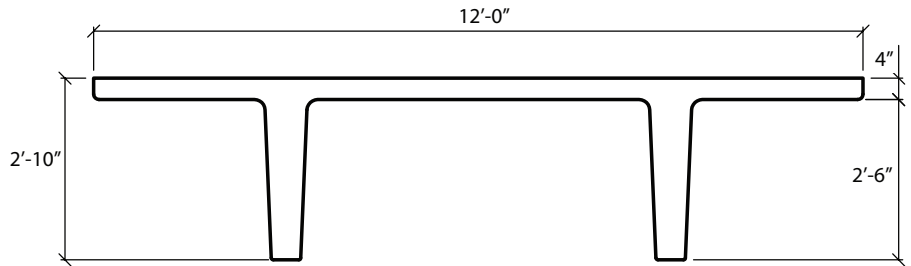


12'-0" x 34" PreTopped Double Tees

Dead Load Weight of Tee = 85 psf



Section Properties	
A=981 in. ²	Yt=8.64 in.
I=92,237 in. ⁴	Yb=25.36 in.

ϕM_n ft-K	1059	1298	1527	1745	1953	2150	2337
Strands	8-0.6"Ø	10-0.6"Ø	12-0.6"Ø	14-0.6"Ø	16-0.6"Ø	18-0.6"Ø	20-0.6"Ø
Span in Feet	Allowable Superimposed Load in Pounds Per Square Foot						
38	242						
40	212						
42	186	243					
44	164	216					
46	145	192	237				
48	128	171	212				
50	113	152	191	227			
52	99	136	171	205			
54	88	122	154	186			
56	77	109	139	168			
58	67	97	125	152	171		
60	59	86	113	138	156		
62	51	77	102	125	143		
64	44	68	91	114	131		
66		60	82	103	120	129	
68		53	74	93	109	119	
70		47	66	84	100	109	
72		40	59	76	91	100	107
74			52	69	84	92	99
76			46	62	76	84	91
78			41	56	70	77	84
80				50	63	71	77
82				44	57	65	71
84					51	59	65
86					46	54	59
88					41	49	54
90						44	50
92						40	45
94							41

Camber



1"-2"



≥ 2"