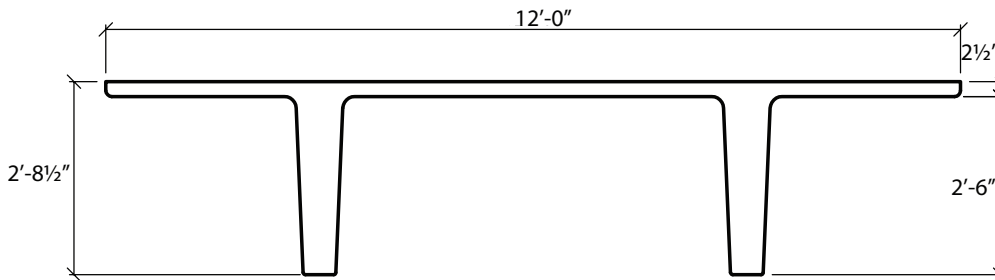


## 12'-0" x 32 1/2" Double Tees No Structural Topping

Dead Load Weight of Tee = 66 psf



Section Properties	
A=765 in. <sup>2</sup>	Yt=9.36 in.
I=74.971 in. <sup>4</sup>	Yb=23.14 in.

∅M <sub>n</sub> ft-K	1007	1232	1448	1653	1847	2031
Strands	8-0.6"∅	10-0.6"∅	12-0.6"∅	14-0.6"∅	16-0.6"∅	18-0.6"∅
Span in Feet	Allowable Superimposed Load in Pounds Per Square Foot					
42	188	241				
44	167	215				
46	148	193	235			
48	132	173	212			
50	118	156	192			
52	105	140	173			
54	94	126	157	181		
56	84	114	143	165		
58	75	103	130	151		
60	67	93	118	138		
62	59	84	107	127		
64	53	76	97	116		
66	47	68	89	106	116	
68	41	61	81	98	107	
70		55	73	90	98	
72		49	67	82	90	
74		44	60	75	83	90
76			55	69	77	83
78			49	63	71	77
80			44	58	65	71
82			40	53	60	66
84				48	55	60
86				43	50	56
88					46	51
90					42	47
92						43
94						40

**Camber**

1"-2"

≥ 2"