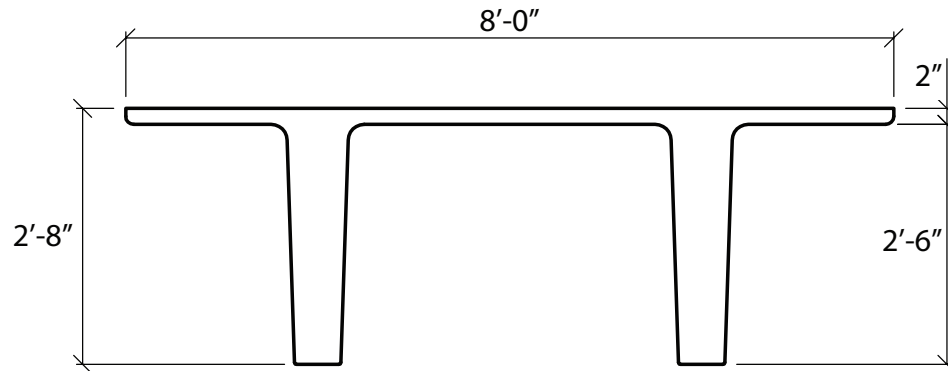


8'-0" x 32" Double Tees With Structural Topping

2 INCH MINIMUM AT MIDSPAN

Dead Load Weight of Tee with Topping = 100 psf



Section Properties	
A=731 in. ²	Yt=10.48 in.
I=75.650 in. ⁴	Yb=23.52 in.

ϕM_n ft-K	771	925	1065	1188	1297	1390	1469
Strands	8-1/2"Ø	10-1/2"Ø	12-1/2"Ø	14-1/2"Ø	16-1/2"Ø	18-1/2"Ø	20-1/2"Ø
Span in Feet	Allowable Superimposed Load in Pounds Per Square Foot						
40	226						
42	198						
44	174	224					
46	153	198	240				
48	134	176	214	248			
50	118	156	191	222	249		
52	103	139	171	200	225	246	
54	90	124	153	180	203	223	234
56	79	110	137	162	184	202	210
58	68	97	123	146	166	182	189
60		86	110	132	150	164	170
62		76	98	118	136	147	153
64		66	88	106	123	132	138
66		58	78	96	111	118	124
68			69	86	99	106	111
70			61	77	88	94	99
72				68	78	84	88
74					68	74	78
76						65	69

Camber
 1"-2"
 ≥ 2"