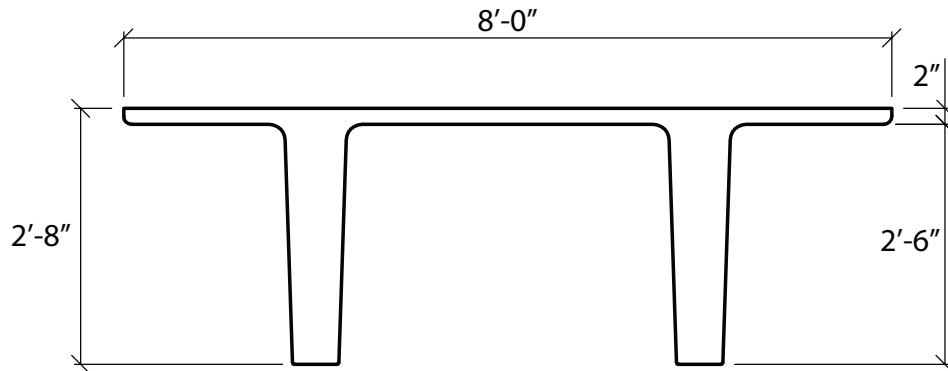


8'-0" x 32" Double Tees No Structural Topping

Dead Load Weight of Tee = 75 psf



Section Properties	
A=575 in. ²	Yt=11.07 in.
I=57,669 in. ⁴	Yb=20.93 in.

ϕM_n ft-K	562	719	862	989	1102	1199	1282	1349
Strands	6-1/2"Ø	8-1/2"Ø	10-1/2"Ø	12-1/2"Ø	14-1/2"Ø	16-1/2"Ø	18-1/2"Ø	20-1/2"Ø
Span in Feet	Allowable Superimposed Load in Pounds Per Square Foot							
34	248							
36	215							
38	187							
40	163	225						
42	143	199	249					
44	125	176	222					
46	110	156	198	236				
48	96	139	178	212	243			
50	84	124	159	191	219	244		
52	74	110	143	172	198	221	237	245
54	64	98	128	156	180	201	216	223
56	56	87	116	141	163	183	196	203
58		78	104	128	148	167	179	185
60		69	94	116	135	152	163	169
62		61	84	105	123	139	149	154
64		54	75	95	112	127	136	141
66		47	68	86	102	116	124	128
68		41	60	78	93	106	113	117
70			54	70	84	97	103	107
72			48	63	77	88	94	98
74				57	70	81	86	89
76				51	63	73	78	82
78					57	67	71	74
80					52	60	65	67
82						54	58	61

Camber

1"-2" (Grey box)

≥ 2" (Red box)